

Bangladesh Women's Health Coalition

BWHC

Promoting Women's Health and Rights

Organizational Profile 2011



Bangladesh Women's Health Coalition

10/2, Iqbal Road

Mohammadpur, Dhaka – 1207

Tel: 8110974-75, 8122876

Fax: 880-2-8117969

E-mail: adminbwhc@professionals.com.bd

Web : www.bwhc.org.bd

BWHC PROFILE

1. Name of the organization	Bangladesh Women's Health Coalition (BWHC), 10/2, Iqbal Road, Mohammadpur, Dhaka -1207 Phone : 8110974-5, 8122876 Email : adminbwhc@professionals.com.bd Web : www.bwhc.org.bd
2. Date of Inception	1 April 1980
3. Legal Status	Bangladesh No: S-725/10 dated 1980-1981 & DSW/FDO/R-127 dated 20.10.1982
4. Contact Person of the organization	Md. Masudul Haque Chief Executive BWHC 10/2, Iqbal Road, Mohammadpur, Dhaka-1207 masudbwhc@professionals.com.bd
5. Organizational Strength:	Total staff : 226 (including Projects) Management : 26 Non management : 170 Support Staff : 30 Central Office : 13 8 SRHP Centers : 56 GFATM 908 : 122 GFATM Head Office : 14 Drop in centre (DIC) : 108 HSP : 06 FPTRRP : 22 Supportive staff : 07
6. Number of Service Centers:	Total :116 Static Reproductive & Sexual Health centers (Core Program) : 08 Satelliethealthcenters : 16 BWHC consortium Health Centers (48 DICs, 4 Outlets) : 52 HSP Integrated Health center (IHC -01+ Hotels 38)) : 39 Fistula Patient Rehabilitation Centre : 01
7. Coverage	Division : 6 District : 28 Upazilla : 28
8. BWHC Partners	<ul style="list-style-type: none"> • Association of Voluntary Action for Society (AVAS) • Rural Poor Development Organization (RPDO) • Health and Education for the Less-Privileged People (HELP) • Padakhep Manabik Unnayan Kendra (PADAKHEP) • Sylhet Jubo Academy (SJA). • Bangladesh Nari Shangbadik Kendro(BNSK)
9. Networking Organization	National STI/AIDS Network CUP: Coalition for the urban poor. BNWLA: Bangladesh National Women Lawyer Association. BBF : Bangladesh Breast Feeding Foundation NEARS: Networking for Ensuring Adolescents Rights & Services FRE-B : Forum for the Rights of the Elderly, Bangladesh WRA,B : White Ribbon Alliance, Bangladesh Shanghati: Sex Worker's Forum VHSS: Voluntary Health Services Society ADAB: Association for Development Agency in Bangladesh

BACKGROUND

Bangladesh Women's Health Coalition, BWHC came into existence in 1980 as a non-governmental organization with the vision to 'Improve the Health Status of the Women of Marginalized Community'. It was in the early 80's when Family Planning came into a cross –road due to the policy change of US government and USAID stopped funding for Menstrual Regulation, MR . During that period maternal mortality due to septic abortion was very high. It was a challenging task for the organization to provide MR because of many social barriers. BWHC overcame the obstacles through sincerity , commitment and hard work.

It was a momentous leap for BWHC , when the urgency of Reproductive Health was echoed in the International Conference on Population and Development (ICPD) in 1994 where it stressed attainment of Reproductive Health through a holistic framework guided by the principles of human rights , equality and gender equity.

BWHC expanded gradually over the time both geographically and programmatically. The organization didn't take too long to understand the importance of community empowerment. Thus in 1985 along with the clinic based activities; integration of community involvement was introduced. BWHC pioneered in establishing a health service delivery model, where the community women have access a wide range of health services not only for her but for her children with informed voice and choice in an equitable environment. The organization strongly observed that women are suppressed and victims of socio-economic condition and suffering from malnutrition & other diseases. In addition traditional attitude and practices, lack of knowledge and inadequate health care facilities , women afflicted with serious but curable diseases suffer in silence.

Since its inception and being a national NGO, it works with underprivileged and marginalized women, children and adolescents through health oriented development interventions with a prime focus on reproductive health services and action oriented community education and behavioral change communication.

BWHC is committed to bring about positive changes in the quality of women's lives by making available reproductive and primary health services as well as other basic social services to enable women to exercise their reproductive and human rights.

The organization believes that quality of women's lives could be enhanced by emphasizing an inclusive gender approach , community participation and working in integration and collaboration with government and other fellow organizations.

Main thrust of the organization is to uphold the belief that women's empowerment and their full participation on the basis of equality in all spheres of society is fundamental for the achievement of equity, development and peace.

In Hindsight it can be said that what BWHC started way back in the early 1980 was something akin to silent revolution in the lives of the unprivileged and marginalized women in Bangladesh. Reproductive health care for women gradually developed into an important basic right for them. BWHC has a reasonable contribution and serving the nation on an average of 1.32 million people annually with inputs to achieve Millennium Development Goals of the country.

BWHC is providing a wide-range of services through 8 reproductive health centers commonly known as Comprehensive Reproductive Health Care Centre (CRHCC) and 24 satellite clinics, 52 Drop in Centers (DIC) for vulnerable population to HIV covering seven administrative divisions in rural and urban locations.

The program activities are always focused on women, children, adolescent. Some of the major programs and projects so far ongoing /completed are:

Reproductive Health & Rights

- Reproductive & Sexual Health Program for urban, semi urban & rural population,
- Reduction of Unsafe Abortion in Rural Bangladesh (SAAF)
- Fistula Patient's Treatment, Recovery & Rehabilitation Project,
- Older Women Health Project (OWHP)
- Women Health and Rights Advocacy Partnership (WHRAP) Project,
- Adolescent Friendly Reproductive Health Program
- MR Services and Training Program

Prevention and control of RTI/STI/ HIV/ AIDS:

- Expanding Provision of Essential Services to Street, Hotel and Residence Based Female Sex Workers-GFATM -908
- HIV-AIDS/STD Prevention (Modhumita) Project



Completed Projects

- MR Training for Overseas Doctors and Paramedics
- Empowerment of Women through Enhancing Women's Rights and Advocacy,
- Socially Disadvantaged People's Program
- Research on Influence of Women's Empowerment on Health Across Generations in Bangladesh
- Community Managed Health Care Project
- Urban Primary Health Care Project
- Reproductive Health Initiatives for Youth in Asia (RHIYA)
- Nutrition Surveillance Project
- Essential Nutrition Action (ENA) Project

BWHC is governed by General Members drawn from different disciplines with a wide range of experience and expertise for policy formulation and necessary guidance.

BWHC is confident that with the support from development partners and the government, it will be possible to go a long way in the years to come to achieve the target of the MDGs within the set time frame.



Check-up



Counseling



Women BCC

VISION

Equality of Women in a Just Civil Society

BWHC MISSION STATEMENT

BWHC, as a national NGO works with underprivileged and marginalized women, children and adolescent through health oriented development interventions, with a prime focus on reproductive health services and action oriented community education.

BWHC is committed to bring about positive changes in the quality of women's lives by making available reproductive and primary health services as well as other basic social services that enable women to exercise their reproductive and human rights.

BWHC firmly believes that quality of women's lives is enhanced by emphasizing an inclusive gender approach, community participation and working in integration and collaboration with government and other relevant organizations.

BWHC will continue to distinguish itself as a model of development organization, oriented to health by maintaining professionalism through competent staff to meet the organizational and community needs. The organization is striving to make itself institutionally, program wise and financially sustainable without compromising the quality of services.

CORE VALUES

- Transparency
- Professionalism
- Quality of Care
- Equity
- Innovation
- Partnership

OBJECTIVES

The Overall Objective of the program is; **“Improved health and social status of women in BWHC working areas”**.

Immediate Objectives:

- Objective 1: Improve reproductive & health of target population in BWHC working areas
- Objective 2: Strengthen the operational management of BWHC
- Objective 3: Improve Knowledge management system
- Objective 4: Strategic partnerships improved with evidence base results
- Objective 5: Sustainability of BWHC improved

Thematic Areas

- **Reproductive & Sexual Health**
- **Primary Health Care**
- **Urban Health**
- **Adolescent Health**
- **Ageing Health**
- **Adolescent Family Life Education**
- **Women Empowerment & Rights**
- **Community Development**
- **Disaster Management**
- **HIV/AIDs**
- **Behavioral Change Communication**
- **Fistula Patient Treatment ,Recovery & Rehabilitation**
- **Advocacy & Networking**

Uniqueness

- **Two Prong Approach service Delivery**
 - *Community based Awareness &*
 - *Clinic based Service rendering*
- **Life Cycle approach**
 - From womb to tomb
- **Local Volunteer & cadre development**

Our Expertise

BWHC's overall programs/projects have several distinct characteristics to address major areas like Safe motherhood, Management of unwanted Pregnancies (MR), contraceptive care, Child survival, Prevention and control of RTI/STI/HIV/AIDS, Empathetic counseling, community based BCC, Gender sensitive Adolescent SRH education and Services, Evidence based advocacy, and development of volunteer cadre for sustaining community development initiatives. All these activities are being supported by Program Units; a decentralized Management Information System and Finance and Administrative Unit based at Head Office.

- ***30 years working experience in Health sector***
- ***Develop and Implementation of integrated RHSR program***
- ***Implementation of Community Development program through awareness raising & BCC***
- ***Implementation of multi-sectored HIV/AIDS Program***
- ***Pioneer in working with Brothel based Sex workers***
- ***Training on Menstrual Regulation (MR), RTI/STI/HIV/AIDS and Re-integration of Fistula Patients.***
- ***Community mobilization and BCC for sex workers, clients of sex worker & young people***
- ***Grant Management for other local NGOs***
- ***Collaboration and networking with Govt. national and International organizations.***
- ***Management of Internship students both home and abroad***

BWHC has been working in health sector for the last 30 years. It remained vigilant on the ground with a health service delivery package, that realistic, feasible & locally owned. Through out its journey, the organization has established itself as a long-term partner of the Ministry of Health and Family Welfare (MOHFW). Hence, BWHC is uniquely positioned and fully committed to meet the community needs and provide quality health services in attaining millennium Development Goal (MDGs) in conjunction with Bangladesh Government initiatives.

Our Donors

- **Save the Children, USA**
- **SAAF, IPPF, UK**
- **UNFPA**
- **DGHS**
- **Family health International (FHI)**
- **ARROW**
- **DFID**
- **DANIDA**
- **Local Individuals**




A good standing in working since 1980 (BWHC)

<p>1980 – 1992</p>	<ul style="list-style-type: none"> Started its first clinic with Menstrual Regulation (MR) service in response to reduce high maternal mortality due to septic and clandestine abortion. In 1986, MR fresher and refresher training started for Government FWVs In 1986, it expands its geographical and program coverage (community education & incorporating other SRH and child care under clinic based interventions)
<p>1994-1999</p>	<ul style="list-style-type: none"> An integrated health center was established for sex workers in Tan bazaar brothel Adolescent health program was introduced for both school and non school going Launched a slum based health project in partnership with Plan International - Bangladesh in Dhaka Community based program (CBP) reviewed & decided to work on defined geographical community with 5000 to 5500 households per working areas Community Health Volunteer (all local women) took place as front line workers Actively involved in health sector reform initiatives in conjunction with MOHFW Selected as partner to implement a regional project titled "Empowerment of women through strengthening comprehensive sexual and reproductive health program in partnerships with ICOMP" Awarded to implement "Safe MR Service and Training Program" under Health and Population Sector Program (HPSP) of MOHFW
<p>2000-2003</p>	<ul style="list-style-type: none"> Launched Older Women Health Project as pilot initiative to address how to integrate ageing health care in a primary health care set-up at rural context Involved in implementation of "Intervention with Vulnerable Groups Involved in Sex trade" under UNDP multi-sectoral HIV/AIDS prevention program Awarded to implement "Urban Primary Health Care Project (UPHCP)" Phase I in two partnership areas of Dhaka city Incorporated International MR Training for Medical professionals from Pakistan and Philippines Became a partner of Bangladesh National Nutritional Surveillance Project Signed an agreement with FHI to implement Hotel Based Sex Work project in Dhaka city Became a partner of a regional advocacy partnership project to implement Women Health and Rights Advocacy Partnerships with ARROW
<p>2004-2005</p>	<ul style="list-style-type: none"> Awarded to implement Brothel based sex workers package under HIV/AIDS Prevention Project (HAPP) as lead agency Incorporated two rights based projects titled Empowerment of Women through enhancing women's Rights and Advocacy project (EWTRA), and another project Socially Disadvantaged People's Project (SDPP) to enhance the capacity of the sex workers for alternative livelihood Became a partner with Academy for Educational Development (AED) in collaborative research project
<p>2006-2007</p>	<ul style="list-style-type: none"> Awarded to implement UPHCP phase II at Madhobdi under Narshingdhi district Incorporated a partnership project titled "Fistula patient's treatment, recovery, and rehabilitation center in partnership with DGHS, DMCH and UNFPA, where BWHC is implementing the rehabilitation program Awarded to implement as a lead organization of Safe Abortion Action (SAAF) Project funded by IPPF Awarded HATI project to work all 12 brothels in different location of Bangladesh Awarded GFATM 908 Package to work as a lead agency with other 6 partners
<p>2008-2011</p>	<ul style="list-style-type: none"> Awarded the project "Reduction of unsafe abortion in rural Bangladesh" – a project of Safe Abortion Action Fund (SAAF), IPPF Awarded the project "Older Women Health Project" – a project funded by Help Age International (HAI), Country Office Bangladesh

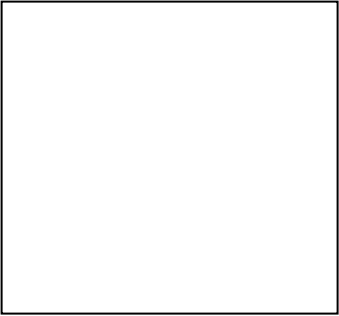
BWHC Governance

BWHC is governed by a 7 member Executive Committee and a general body with 21 members, who are reputed and are of rich professional background. The Chief Executive along with the Senior Management Team is responsible to implement the policies of the Committee

Executive Committee

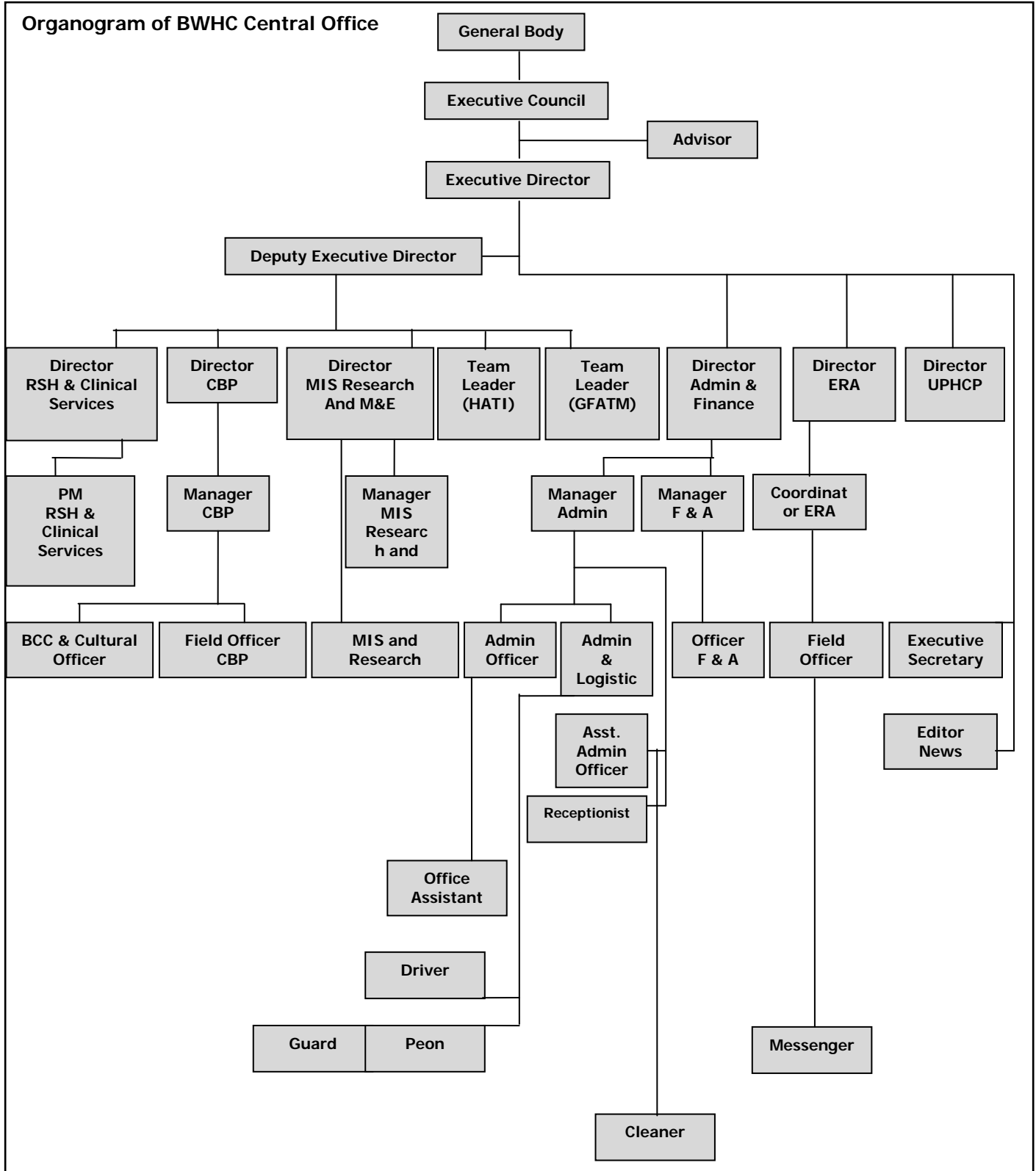
Name	Position	Qualification	Profession
 Prof. Dr. M.Kabir	Chair Person	MA in Statistics, Ph.D in Demography	Professor, Dept. of Statistics. Jahangirnagar University, Dhaka
 Brig. Dr. Suraiya Rahman	Vice Chair Person	MBBS, MRCOG, MD with diplomas	Social work Ex-Head of the department of Gynecology of the Combined Military Hospital and Advisor to the Ministry of Defense
 Prof. Hafizul Islam	Treasurer	Masters degree from Bangladesh and USA and diploma from UK.	Voluntary social work Ex-Professor of the Institute of Social Welfare and Research, Dhaka University

 <p>Prof. Hamida Akhtar Begum</p>	Member	PhD in Psychology	Social work on voluntary basis through many development organizations Ex-Professor of Psychology of Dhaka University
 <p>Mr. Zaidul Kabir</p>	Member	MA	Corporate Business in the Power and Energy Sector of Bangladesh
 <p>Advocate Dilruba Begum</p>	Member	LLB	Voluntary social work Lawyer of Bangladesh Supreme Court
 <p>Md. Masudul Haque</p>	Ex-Officio Member Secretary	MSS in Political Science	Chief Executive BWHC

	Member	M.A, LLB, PhD Researcher University of Dhaka	Voluntary social work Lawyer of Bangladesh Supreme Court
---	--------	--	--

Advocate Qazi Zahed Iqbal

Organogram of BWHC Central Office



ORGANIZATIONAL STRUCTURE

OPERATIONS RESEARCH

Research and Publication Of BWHC

The research unit of BWHC was initially formed focusing on MIS. Gradually it evolved into full fledged MIS, Research and M&E unit. Currently the unit regularly conducts operation research, Survey and Studies on multi dimension aspects, and participate in collaborative /Partnership research with external organizations. like ICDDR,B Academy for educational Development (AED), USA etc. Since 2003 BWHC is also It became a research partner of Helen Keller International (HKI).

The following are the Research and Publication of BWHC

PUBLICATION LIST OF BWHC

Year	Reports/ Study /Research titles	Prepared/Conducted by
2011	End Project Evaluation Report of Reduction of Unsafe Abortion In Rural Bangladesh (SAAF) Project	M Mollah Mahmood Consultant Public Health Specialist Hasina Chaklader Masudul Haque
2010	Need Assessment Survey 2010 on Reduction of Unsafe Abortion in Rural Bangladesh.	Hasina Chaklader Md. Rezaul Karim Nasima Khatun Md. Mamunur Rahman Imran
2010	Annual report 2005 Influence of Mother's Nutritional Status on Under Five Children and Factors affecting it in Rural Bangladesh Mainstreaming Aging in Health: Will it be Possible What We know about Elderly Population's health Problem: Evidences from Rural Bangladesh villages	BWHC team Hasina Chaklader Masudul Haque Hasina Chaklader Prof. DR. M Kabir Hasina Chaklader Prof. DR. M Kabir
2009	Mid Term Evaluation of Reduction of Unsafe Abortion in Rural Bangladesh	Tofayel Ahmed Ph D Hasina Chaklader
2009	Annual report 2004 A souvenir containing reflections of staff regarding Silver Jubilee Study on Early Marriage and Child bearing in Bangladesh	conducted by Jointly BWHC and AED, USA
2008	Home Care situation for the Elderly in Bangladesh	BWHC
2007	Need Assessment Survey on Unsafe Abortion	BWHC , BAPSA & RHSTEP
2007	Impact of Enhancing Women's Legal Rights and Advocacy Program on Empowerment of Women	Dr. M .Kabir Hasina Chaklader Jahanara Sadeque
2006	Positive deviant case studies from BWHC and AED research area	Conducted Jointly by BWHC and AED, USA
2006	Insights (A compilation of nine operation Research)	BWHC
2004	BWHC Annual Report -2003	DR. Julia Ahmed & Team
2004	Fiona and Arian's (Intern from Australia) case story Evaluation Of Women Empowerment Project	Fiona & Arian , Final year student of RMIT university
2004	Base Line Survey of Reproductive & Sexual Health Program of BWHC	Hasina Chaklader & Team
	Operation Research titled "Costing analysis of HIV/AIDS intervention at BWHC was conducted in collaboration with ICDDR'B.	BWHC & ICDDR,B

2003	Base Line Survey on Older People in BWHC Community Working Area(Urban, Semi urban & Rural context)	Hasina Chaklader Masudul Haque Prof. DR. M Kabir
	Sensitizing Male on domestic Violence through male peer educator model.	BWHC
	Socio Economic Situation of urban Elderly Population: Evidence from a micro study	Hasina Chaklader Prof. DR. M Kabir
	Sensitization of Men on Domestic Violence against Women Through Male Peer Educators Model: An Operations Research in Three villages in Bangladesh	BWHC (Women Empowerment Project)
	Three year's trend analysis of MR services in Six centers of BWHC	BWHC
	"Probin Niy Amar Joto Vabna" A case story of older women of Polash center (in Bangla).	Hasina Chaklader Hamida Awal, Polash Center
	BWHC Annual Report -2002	DR. Deel Afroze & Team
2002	Review existing skills of service providers of BWHC	Bangladesh Women's Health Coalition
	Situation of BWHC School based AFLE program in two projects site	BWHC
	Empowerment of Women through Strengthening comprehensive sexual and Reproductive Health Programmes of BWHC: A Base line Survey	BWHC
	BWHC Annual Report -2001	BWHC
2001	Health seeking behavior and demand for health services in the health seeking behavior and demand for health services in the areas served by BWHC BWHC Annual Report -2000	Abul Barkat Matiur Rahman Murtaza Majid Tawheed Reza Noor Human Development Research Center
2000	A situation analysis of older people in Bangladesh (A Collaborative Study with Help Age International)	Bangladesh Women's Health Coalition (BWHC) BAIGGAM, BRAC RIC
2000	A study on cost analysis of Bangladesh health economics women's health coalition (BWHC)	Health Economics Program Public Health Science Division ICDDR,B
1999	A KAP study of Audio Visual Health Education on the Clients of BWHC	Hasina Chaklader Kasmin Khan Seikh M. Shafiqul Islam Dr.Nazneen Akhter
1997	Report Base Line Survey of Agargoan Project Working Area	Md Abdul Hye
1997	A Sample study on Antenatal Care service at Coalition clinic Mirpur: A close observation	Rayhana Begum Hasina Chaklader
1997	A case study: ROSY, a profile of a courageous Volunteer Educator.	Kh. Rebaka Sunyat
1997	A case study : Rahima, a victim of social oppression was turned into an asset from a liability	Hasina Chaklader Rawnak Jahan
1997	Case Report: NAHAR A story of successful breastfeeding	Dr. Nazneen Akhter Rayhana Begum
1997	Report of Community based Knowledge, Attitude& Practices (KAP) survey among Commercial Sex workers Residing in TaanBazar Brothel	Dr. Julia Ahmed Dr. Sarah Hawkes Kasmin Khan Hasina Chaklader
1997	A study to determine the causes of Rejection, repetition and determinant of MR cases among the projects of BWHC	Hasina Chaklader Dr.Nazneen Akhter Kasmin Khan
1996	Reproductive Rights in Practice (Contraceptives at your door step : Two urban & two rural areas of Bangladesh) A collaborative study with women's health action foundation WHAF, the Netherlands.	Sandra Kabir Hasina Chaklader

1996	Monitoring Family Planning & Reproductive Rights	Anita Hardon Ann Mutua Sandra Kabir Elly Englkes
1996	A KAP study on Iodide Salt among the post learners of Functional Literacy Program in the urban projects of BWHC.	Kasmin Khan Hasina Chaklader
1996	Report on Base Line Survey of the community development Working Areas (95-96 program period) of BWHC.	Hasina Chaklader Kasmin Khan Nazneen Sultana
1996	A case study on utilization of Health Care Services by MISIRON'S Family at Coalition Project -Tangail	Hasina Chaklader Parvin Dina
1995	A survey on the causes of the desire for more than two children among the health care user of coalition Project , Dhaka	Hasina Chaklader Rawnak Jahan
1995	Annual report 94-95	Hasina Chaklader
1995	A survey report on 'Breast Feeding Practices/ Behaviour of Lactating Mothers' at Rishipara, Kazirbag - Community Working area ('93-'94) of Dhaka Project	Hasina Chaklader
1995	A Study on the Causes for Rejection and Deferral of MR Cases among the nine projects of BWHC	Hasina Chaklader Dr. Nazneen Akhter
1995	Report on Community Development Base Line Survey of Nine Projects Working area (1994 -1995)of BWHC	Hasina Chaklader Kasmin Khan
1995	Bangladeshwomen's Health Coalition MCH-FP Clinical Management of Coalition Project -Narayanganj.	Sandra Mostafa Kabir Hasina Chakalader Dr. Nazneen Akhter
1994	A study to determine the prevalence of reproductive tract infections among health care users of a Bangladesh women's health coalition clinic.	Dr. Nahid M. Chowdhury
1994	Annual Report 1994	Sandra Kabir Hasina Chakalader Dr. Nazneen Akhter Kh. Rebaka Sunyat
1994	Annual Report 92-93	Hasina Chakalader
1993	Cause of Rejection and Deffered MR among the nine projects of BWHC	Ashoka Dey Chowdhury
1993	Case study-01: Farida a client of Lohagora Clinic, a Project of Bangladesh Women's Health Coalition	Hasina Chaklader
1993	Base Line Survey of the Dhaka, Iohagora, Shaghata, Chaddagram and Zokigonj Projects of BWHC	Hasina Chaklader
1993	M.R Cost Analysis for 7 Coalition Project (1991-1992)	Hasina Chaklader
1988	Post MR Contraceptive Continuation Rate of Clients of Coalition Clinic Narayanganj	Gulshan A. Choudhury
1988	A study on Service Utilization Patterns of Six Coalition Clinics	Gulshan A. Choudhury
1987	Summary of Data on Sources of Medical Care characteristics of 513 Women in the Mirpur base Line Survey area of BWHC	Sandra Mostafa Kabir Gulshan A. Choudhury
1987	A study on Socio Demographic Characterstics on MR Clients At Coalition Clinics Palash and Dhaka	Gulshan A. Choudhury
1987	Case Study of Increased Rejected and Deferral MR Clients at the Coalition Clinic Dhaka in December 1986	Sandra Mostafa Kabir Gulshan A. Choudhury
1987	Study on Intervention Necessary For Preventing Rejection Of MR Clients	BWHC, BAPSA, MFSTC & MRTSP
1986	Baseline Survey of Mirpur Project area of BWHC	Gulshan A. Choudhury
	Baseline Survey of the BoloraPproject area BWHC	Gulshan A. Choudhury
1985	A study of Socio- demographic and nutrition status of (Children up-to 15 years) availing services at Mirpur and Polash Coalition Clinic.	Gulshan A. Choudhury
1984	A study of Socio- demographic characteristics of 300 MR Clients in Mirpur Coalition Clinic, Dhaka.	Gulshan A. Choudhury

Working Locations

<p>HSP Project Mgt Office Md. Rezaul Karim Project Manager 64/2 2nd Floor New Airport Road, Mohakhali Dhaka 1212 Tel: 88-02-8810389 Cell : 01713011612 Email: bwhchbsw@dhaka.net</p>	<p>GFATM Package 908 Project Mgt. Office Dr. Rounak Faizi Khan Team Leader, BWHC Consortium 10/2 Iqbal Road, Mohammadpur Dhaka-1207, Bangladesh Tel; 8110974-5, Email : Teamleaderbwhc@gmail.com bwhcgm@gmail.com</p>	<p>FPTRRP Project Management Office Khandoker Khaled Shams Project Coordinator 18/2 Bokshibazar Dhaka 1211 Cell: 01732341831 01912531079 Email : fprrp@yahoo.com</p>	<p>Reduction of Unsafe Abortion in rural Bangladesh (SAAF) Project Project Mgt. Office Hasina Chaklader Coordinator –SAAF Director-MIS ,Research and M&E <i>BWHC (Bangladesh Women's Health Coalition)</i> 10/2 Iqbal Road, Mohammadpur Dhaka-1207, Bangladesh Tel; 8110974-5, 8122876 Fax: 880-2-8117969 Email: mis_research@professionals.com.bd</p>
<p>Centre Management & Service Delivery Office</p>			
<p>BWHC Narayanganj Ms. Maleka Begum Center Manager 43,New Chashara(Jamtola) Thana Fatulla, Dist: Narayanganj Tel: 7611216 Email: bwhc.narayangoni@gmail.com Established: 1981</p>	<p>Ms. BWHC - Tangail Ms. Dilara Rahman Center Manager Dhaka Tangail Road Tangail. Tel : 0921- 53230 Email: ab_rakib@yahoo.com Est : May 1981</p>	<p>BWHC – Palash Ms. Gulnahr Begum Center Manager WAPDA Road Upazilla: Palash Dist: Narsingdi – 1613 Tel : 01712-640736 Email: bristy19@yahoo.com Est: February 1984</p>	<p>BWHC- Lohagara Apurbo Kumar Shil Center Manager New Lohagara P.O.& UZ: Lohagara Dist: Narail-7511 Tel :01711201473 Email: bristy19@yahoo.com Est : June 1988</p>
<p>BWHC- Shaghata Ms. Aynoon Nahar Zeba Center Manager Vill: Putimari, Post: Khamar Dhonaruha Upazilla: Shaghata Dist: Gaibandha 5761 Phone: 01712016242 Email: sadolon@gmail.com Est: 1990</p>	<p>BWHC – Chowddagram Ms. Hasin Jahan Vill :Bangpai P.O: Munshirhat Upazilla: Chowddagram Dist.: Comilla-3350 Tel : 01712-016244 Email : mrbablu67@gmail.com Est: September 1990</p>	<p>BWHC - Zokiganj Mr. Jahangir Alom Center Manager Vill : Aatgram P.O. : Aatgram Upazilla: Zokiganj Dist : Sylhet – 3191 Cell: 01912263090 Email: bwhczakisyl@yahoo.com Est: January 1992</p>	<p>BWHC Jatrabari Ms.Sonia Akhter Centre Manager Dholpur, Jatrabari Dhaka Cell: 01732181918 Est. 2009</p>
<p>Drop In Centers (DIC)</p>			
<p>Airport DIC House # 226A, Ashkona, Dhokhinkhna, Uttora, Dhaka</p>	<p>Ibrahimpur DIC C/O Hazi Yousuf Ali 868 East Kazi Para (opposit to Kazipara bus stand) Counter Lane Mirpur, Dhaka</p>	<p>Pallabi DIC House # 22, Road # 19, Section # 6 Block B, Pallobi,Mirpur,Dhaka</p>	<p>Nakhalpara DIC 53/1 Station Road Tejgoan Dhaka 1215</p>
<p>Fakirapul DIC 101 Maniknagor Miajan Lane Kamlapur Dhaka</p>	<p>Khilgoan DIC 620/A Tilppara, Khilgoan, Dhaka -1219</p>	<p>Kuril DIC House # KA 66, Moushumi Villa(3rd Floor, inside of staire) Kuril, Badda, Dhaka 1219</p>	<p>Motijheel DIC 260/1 Gorom Pani Goli,2nd Floor,Fakirapool, Motijhill Dhaka – 1000</p>
<p>Rampura DIC House # 7, West Rampura, Omer Ali Lane, Ground Floor Rampura, Dhaka</p>			

HIV/AIDS Program of Bangladesh Women's Health Coalition (BWHC):

The genesis of HIV/AIDS program at BWHC started in 1994; a comprehensive health center was established for sex workers & their children at Narayangonj, Taan Bazar & Nimtali brothel, covering 3000 – 4000 brothel inmates. This project remained functional from 1994 to 19999, until its eviction. This project was instrumental to gain a complete knowledge about the livelihood, risk and vulnerability structure of the sex workers. Currently, the organization is involved in implementing three major HIV/AIDS related project in rural and urban locations. These are: brothel based sex workers package in 8 brothels through a consortium approach. Under Dhaka and Barishal division; Hotel based HIV STI prevention project in 70 hotels in Dhaka; School based HIV/AIDS education program for adolescents in 36 schools in rural and semi urban areas. Recently, the organization also introduced HIV-VCT in its three partnership areas of UPHCP (Urban Primary Health Care Project). Besides this BWHC has also incorporated HIV/AIDS component i.e. Counseling, STI management and Condom promotion, and targeted HIV/AIDS BCC under its comprehensive reproductive and sexual health program for rural population.

The organization has earned practical experience in grant Management for other organizations in following projects:

HIV/AIDS Prevention Project (HAPP): Brothel based Sex Workers Project

BWHC is implementing this project as a lead agency from Aug 2004 to Nov 2007. The consortium partners are **Safe MR** ICDDR, CHCP and PSTC.

Services and Training Program under MOHFW: BWHC awarded this project through a competitive bidding process. This project was implemented in partnership with BAPSA and RHSTEP, two MR pioneering organizations in Bangladesh. This project was implemented for the period of 2002 to 2003.

BWHC (Bangladesh Women's Health Coalition), the lead agency of this consortium, is a national NGO working country wide over two decades in Bangladesh. Following its formation in the year 1980, BWHC has been operating with its head office in Dhaka since 1982. The institutional objective of the organization is:

To bring about positive changes in the quality of women life by making available primary and reproductive health care services as well as other basic social services that enable women to exercise their health and human rights.

The formation and operations of BWHC is a glowing example of how the development organizations can make substantial contributions towards development of women who have been held back and given a low status in their families and respective communities. The concept of gender equity being the essence of all its activities, BWHC has catalyzed the participation of women in various development activities through improving their awareness on health matters and to the fact that access to opportunities for good health, like other opportunities, is also their birth right. In this process of project operations, BWHC has yielded a great variety and range of efficiency in activities relating to diagnosis, delivery of clinical services, BCC (Behavior Change Communication) among women of reproductive age group and beyond, adolescents and men in both urban, semi urban and rural areas.

The profile of BWHC target beneficiaries is unique in the sense that it has been addressing a specific type of beneficiaries (under privileged and marginalized women, children and adolescents).

BWHC firmly believes that quality of women's lives is enhanced by emphasizing an inclusive gender approach, community participation and working in close collaboration with government and other relevant organizations. In this context BWHC implements the major components of the ESP (Essential Service Package) under HNPS; implement UPHCP (Urban Primary Health care project) in three different partnership areas under City Corporation; and brothel based sex workers package under HAPP in Dhaka and Barishal divisions. The organization also establish itself as a long time trusted partner of MOHFW for rendering MR fresher and refresher training for government FWVs (Family Welfare Visitors).

Our Partners on - HIV AIDS Program

GFATM-908: Provision of essential services to Street-Based and Hotel/Residence-Based Female Sex Workers (SB&H/RB FSW).

The Consortium is constituted as follows:

<i>Name of Organizations</i>	Role in the Consortium
Bangladesh Women's Health Coalition (BWHC) 10/2, Iqbal Road, Mohammadpur, Dhaka-1207	Lead agency
Rural Poor Development Organization (RPDO) House# 13, Block-E, East Adalat Para, Tangail-1900.	Associate
Sylhet Jubo Academy (SJA) House no. 20/A, Main Road, Block-C, Shahjalal Upashar, Sylhet-3100	Associate
Association of Voluntary Action for Society (AVAS) Munni Nibas, Alekanda Road, Barisal-8200	Associate
Health and Education for The Less-Privilege People (HELP) House no.6, Lane no.2, Road no.3, Block-K, Haliashar Housing State, Chittagong	Associate
Padakhep Manabik Unnayan Kendra (Padakhep) House-548, Road-10, Adabor, Mohammadpur, Dhaka-1207	Associate
International Centre for Diarrhoeal Diseases Research, Bangladesh (ICDDR,B) Mohakhali, Dhaka 1212, Bangladesh	Associate

1. Vision of the consortium

The vision of the consortium is to create an enabling environment through public private partnerships where female sex workers as the most marginalized population in the society are free from discrimination and have access to equitable health services and other basic public services.

2. Understanding of the EOI /Assignment:

This consortium has agreed to work together to prepare a response to the grant received by Bangladesh No. BAN-607-GO8-H. This consortium aims at up-scaling HIV essential services for female sex workers in underserved areas and they are capacitated to protect themselves from HIV/AIDS. In this process it will seek active participation & involvement of female sex workers, relevant self help groups (SHG) and community based organizations in the identification and mapping of gap areas, development of BCC materials on essential services that are easily communicable and retainable for the target beneficiaries. It will involve

relevant SHG who can participate in the design and implementation of training activities that are practical and sound for the implementation of this package. The partners of this consortium are fully convinced that developing public-private partnerships and undertaking issue specific joint advocacy workshops are important preconditions to bring positive changes in the lives of female sex workers, who are treated as marginalized and excluded population in the society. In light of that it will build partnerships with relevant existing associations, SHG, CBOs and local government to incorporate innovative and sustainable programmatic interventions and provision of supplementary income generation services for them.

3. Qualification of the NGO partners in this consortium

BWHC (The lead agency)

BWHC (Bangladesh Women's Health Coalition), the lead agency of this consortium, is a national NGO working country wide over two decades in Bangladesh. Following its formation in the year 1980, BWHC has been operating with its head office in Dhaka since 1982. The institutional objective of the organization is:

To bring about positive changes in the quality of women life by making available primary and reproductive health care services as well as other basic social services that enable women to exercise their health and human rights.

The formation and operations of BWHC is a glowing example of how the development organizations can make substantial contributions towards development of women who have been held back and given a low status in their families and respective communities. The concept of gender equity being the essence of all its activities, BWHC has catalyzed the participation of women in various development activities through improving their awareness on health matters and to the fact that access to opportunities for good health, like other opportunities, is also their birth right. In this process of project operations, BWHC has yielded a great variety and range of efficiency in activities relating to diagnosis, delivery of clinical services, BCC (Behavior Change Communication) among women of reproductive age group and beyond, adolescents and men in both urban, semi urban and rural areas.

The profile of BWHC target beneficiaries is unique in the sense that it has been addressing a specific type of beneficiaries (under privileged and marginalized women, children and adolescents).

BWHC firmly believes that quality of women's lives is enhanced by emphasizing an inclusive gender approach, community participation and working in close collaboration with government and other relevant organizations. In this context BWHC implements the major components of the ESP (Essential Service Package) under HNPSP; implement UPHCP (Urban Primary Health care project) in three different partnership areas under City Corporation; and brothel based sex workers package under HAPP in Dhaka and Barishal divisions. The organization also establish itself as a long time trusted partner of MOHFW for rendering MR fresher and refresher training for government FWVs (Family Welfare Visitors).

Rural Poor Development Organization (RPDO):

RPDO is incepted in 1994 with a vision to establish an enlightened, equitable and sustainable society, where justice prevails and peoples are free from poverty. RPDO is a rapidly growing NGO working in fourteen districts in Khulna, Barisal and Dhaka divisions. The profiles of the target population are oppressed and deprived poor and needy people without any distinction of race, gender, religion & age. The organization has been striving to improve the socio-economic condition of the underprivileged and destitute people with special attention to women and children. The specific objectives of the organizations are to lift up the under privileged population to be self-dependent and can create alternate leadership through social, economical

and political empowerment. The organization is known for its participatory approaches in forming groups and implementing group activities for their economic upliftment. The organization is proactive in conflict resolution through the involvement of target beneficiaries. RPDO undertakes rehabilitation and relevant socio-economic development programs particularly for high risks population (Sex workers & their clients), family members of high risks population, drug addicts, victims of human trafficking and the unemployed youth. The organization has introduced rights-based approach in timely fashion in full cognizant with the fact that active participation of women in all sorts of development activities is urgent to accelerate women based development initiatives.

Sylhet Jubo Academy (SJA):

SJA is incepted in 1999 with a noble aim to develop as a local, not-for-profit and non-political development organization that would operate at "grassroots" level to address the structural vulnerabilities of economically and socially marginalized members of the community. SJA is a Sylhet based NGO and has been working in three districts of Sylhet division. Primarily it had been working in different Upazila of Sylhet now it has expanded its working areas up to Sylhet and Chittagong division.

Initially, the organization specialized in youth training projects in order to develop young people's skills and thereby their economic prospects. Since then, SJA has expanded its programmatic and geographical coverage covering up to ½ million people in the Sylhet division. Today, its work focuses on combating the problems of poverty, illiteracy, unemployment, malnutrition and disease and toward reducing excessive population growth.

SJA has a pool of skilled trained staff to build capacity of the service providers and target population. In this regard training resource and materials are available for conducting training on alternative livelihood/ Income generation, awareness and skill development of relevant social aspects. A total 163 full time staff member are working to carry out its activities.

All disadvantaged group who are socially excluded from society, especially women and children living below the poverty, disabled children, tea garden labor and their children and sex worker of different locations are served by SJA.

Association of Voluntary Action for Society (AVAS):

AVAS is based in Barisal and covers all six districts of Barisal division. The organization is incepted in 1998 with a broad goal to establish an environment friendly and a right based society for the disadvantaged people. Its mission is to establish poverty free, impartial responsible governance, and environment friendly livelihood, where children and women's rights are ensured and people can exercise the basic human rights. Its objectives are to ensure women's rights in decision making at different levels and increase their participation in income generating activities and as well as in leadership roles; to establish and uphold the social and human rights of the disadvantaged people of the society; to change the life style of the target people through equitable health & education facilities and defending the negative impacts on environment; to assist the target group financially and legally to reduce their dependency on money lender. It has been working with hotel and street based sex workers for the last five years. Its major activities include DIC management, training and local level advocacy.

HELP (Health & Education for Less Privileged)

HELP is a Chittagong based NGO working in Chittagong and Cox's Bazar districts. With a view to develop social and spiritual life of the marginalized people, HELP started its work in 1990 in urban and rural areas of Chittagong and Cox'sbazer. The major focus of the program interventions is HIV/ AIDS for the high risk population, drug addiction and child education. HELP emphasis to generate local resource and people involvement in the program intervention. To make effective program sustainability HELP implements its activity with the involvement of City Corporation, relevant government departments, corporate sector and the local fund contributors. At present a total 71 staff are working to carried out the planned activities. HELP established a residential training center at Cox'sbazer for capacity building to its staff, target population and other organization working in the development field. For smooth operation of the training center a team of resource person and training module on different development subjects has been developed. The organization also developed a good skill in developing innovative BCC/ IEC materials on HIV/ AIDS to implement the BCC/ peer education activity effectively, which is the one of the expertise area of the organization. At present HELP operates 3 drop in centers for hotel based sex worker in Chittagong and Cox'sbazer under BAP where 30 trained peer educators are working. HELP has established 20 non formal education centers in the remote areas of Cox'sbazer district, where there are no government facilities. These centers are functioning by the involvement of local community contribution. To make proper documentation and dissemination of programmatic information, HELP conducts research on sexual behavior and provides assistance to ICDDR,B to conduct condom barrier study, sero surveillance study.

Padakhep Manobik Unnayan Kendra (PADAKHEP):

Padakhep is one of the largest NGOs in Bangladesh working in all six divisions and 41 districts for poverty reduction and social development activities. Padakhep is incepted in with a vision to establish a democratic, just, capable and poverty free society, with the mission of creating self-financed, self-employed and self-empowered communities with increased capabilities by providing need based services and supports like awareness raising, counseling, nutrition, health, sanitation, education, agriculture, insurance, savings, credit, marketing, gender, environment, social security, technology. The organization has adopted a participatory approach to assist beneficiaries as the development partner or facilitator not to control them. It has been implementing the activities related to HIV/AIDS/STD, Family Planning/ Reproductive Health, Health & Nutrition and Social Development Program for the period of ten years in different urban and peri-urban area of Bangladesh under different health related projects to assist the stakeholders vulnerable to HIV/AIDS/STD.

Padakhep is one of the few NGOs working with injecting drug users as well as other vulnerable population including sex workers. Padakhep is a pioneer organization in designing innovative program to provide alternate income generation services to marginal and vulnerable population in Bangladesh. It is also leading the largest advocacy program related to HIV/AIDS in the country titled "Advocacy and Sensitization of Religious and Community leaders, Parents and Policy Makers on HIV/AIDS" under the project "Prevention of HIV/AIDS among young people in Bangladesh" funded by GFATM. Padakhep has been operating 12 drop-in centers for IDUs and 3 DIC for street children.

International Centre for Diarrhoeal Disease Research, Bangladesh (ICDDR,B):

ICDDR,B is the only international research, training and service organization located in a developing country. Since its inception in 1978, it has been providing entire range of reproductive health services among different target population in the project areas. It started working in sexually transmitted infection and HIV/AIDS issues since 1995 and providing services and training and conducting research among hotel, brothel and street based sex workers; MSM population and injecting drug users directly and in collaboration with government and non-government partners. ICDDR,B has special skills in conducting mapping exercise, development and testing BCC materials, design and provide training and advocacy

works at national and international level. ICDDR,B is implementing the HAPP sex workers programs in collaboration with other partners and leading the operations research component of GFATM second round activities for HIV/AIDS prevention among young population in Bangladesh.

Organizational capacity and experiences

Name of Organization	Area coverage	Number of staff	Experiences
BWHC	Division: 6 Districts: 14	Management: Field: Volunteers:	<ul style="list-style-type: none"> -Experience in CBO & partner's capacity building - Develop and implementation of integrated RH program.-Implementation of multi-sectoral HIV/AIDS program -DIC management - Training on RTI/STI/HIV/AIDS & Menstrual Regulation - Community mobilization and BCC for sex workers, clients of sex workers & young people - Grant Management for other local level NGOs - Collaboration and networking with Govt. national, and international organizations.

Experience in Programs of Bangladesh Women's Health Coalition (BWHC)

Last five years implemented projects -

Name of Project	Scope of work	Implementation Period	Donor
HIV & STI Prevention (HSP) Project	<ul style="list-style-type: none"> • Condom promotion and distribution • Awareness raising on HIV/AIDS and STI • Voluntary counseling and testing • STI case management • Capacity building • Advocacy meeting • 	September 2003 to September 2009	USAID through Family Health International
Reduction of Unsafe Abortion In Rural Bangladesh (SAAF Project)	<ul style="list-style-type: none"> • Reduced mortality and morbidity from unsafe abortion • Ensure reproductive choice of women with unintended pregnancies • Develop an improved abortion (MR) service delivery mechanism for hard to reach population. 	July 2007 to June 2009	International Planned Parenthood Federation
Outreach Project of Socially Disadvantaged People Programme (SDPP)	<ul style="list-style-type: none"> • To empower sex workers to exercise basic rights and gain access to services, improve quality • Support to choose alternative livelihood options. 	January 2005 to 31 March 2009	Concern World Wide DFID
Brothel Based Sex Workers' package under HAPP Location : 8 brothels in Dhaka & Barisal	<ul style="list-style-type: none"> • Peer Education • Counseling • Condom Promotion • Training on HIV/AIDS • STI Management 	November 2006 to December 2008	UNICEF
HIV/AIDS Targeted Intervention Project (HATI) – Brothel Based	<ul style="list-style-type: none"> • Reduced STI through condom promotion • Address Sex Workers rights by network building with the sex workers “Network Forum” • Provide package of clinical service and community based service with the active involvement of the PEs. 	2007 to October 2008	GoB through UNICEF
Research on Influences of Women's Empowerment on Health Across Generation in Bangladesh Location : Rangpur, Faridpur, Magura	<ul style="list-style-type: none"> • To examine socio culture processes that determine age at marriage and age at initiation of child bearing 	November 2006 to October 2008	Academy for Educational Development (AED), USA

Urban Primary Health Care Project (PA – 1) Location : Dhaka Metropolitan area, Dhalpur	<ul style="list-style-type: none"> • Delivery care • Comprehensive emergency obstetric care • Management of neonatal complications • FP Services • Laboratory tests • Referred cases from the PHC to the center & others 	July 2006 to June 2008	ADB/ UNFPA DFID/SIDA / GFATM/ORBIS Int.
Urban Primary Health Care Project, PA- 2 Dhaka Metropolitan area, Armanitola, Dhaka Funded by ADB/ UNFPA DFID/SIDA / GFATM/ORBIS Int.	As Above	July 2006 to June 2008	ADB/ UNFPA DFID/SIDA / GFATM/ORBIS Int.
Madhabdi Municipality PA - 1 Narsingdi Madhobdi pouroshova Funded by ADB/ UNFPA DFID/SIDA / GFATM/ORBIS Int.	As Above	July 2006 to June 2008	ADB/ UNFPA DFID/SIDA / GFATM/ORBIS Int.
Empowerment of Women Through Enhancing Women's Rights and Advocacy Location: Lohagora & Tangail	<ul style="list-style-type: none"> • To empower women • To promote human rights • Violence Against Women • Strengthen social protection • women through comprehensive sexual and reproductive health program 	March 2005 to February 2007	Manusher Jonno

